



## ABOUT LOCAL PLANS

**Local Health Plans of California (LHPC)** is a statewide trade association that represents all 17 of the community-based, not-for-profit health plans that provide access to critical and comprehensive health care services for low-income populations enrolled in California's Medicaid program, Medi-Cal.

## COMMUNITY INVESTMENT

In addition to providing access to high quality health care through robust provider networks, local plans utilize their net income or reserves to improve community health, focusing on:

- Access & Quality
- Food Stability & Nutrition
- Housing
- Workforce Development
- Community Health & Wellbeing

## 17 MEMBER PLANS

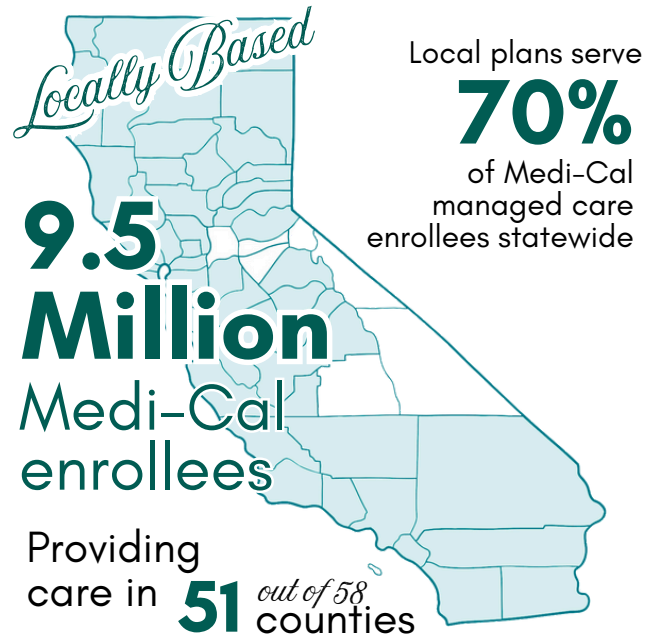
Alameda Alliance for Health  
CalOptima Health  
CalViva Health  
CenCal Health  
Central California Alliance  
for Health  
Community Health Group

Health Plan of Imperial Valley  
Contra Costa Health Plan  
Gold Coast Health Plan  
Health Plan of San Mateo  
Health Plan of San Joaquin/Mountain  
Valley Health Plan

Inland Empire Health Plan  
Kern Family Health Care  
L.A. Care Health Plan  
Partnership HealthPlan of California  
San Francisco Health Plan  
Santa Clara Family Health Plan



2023 NCQA Ratings:  
**4-star** ratings for Medi-Cal managed care  
were only awarded to **local plans**



All plans are locally based operations with employees who live in the community

Created by their counties, local plans are community-based & locally governed

As mission-driven, not-for-profit organizations, local plans reinvest in their communities

## PEOPLE CHOOSE LOCAL PLANS



**3 out of 4**  
when choice is available



## MEDI-CAL COVERS 14.9 MILLION CALIFORNIANS

Including:



5 million  
children



2.2 million  
seniors and  
people with  
disabilities

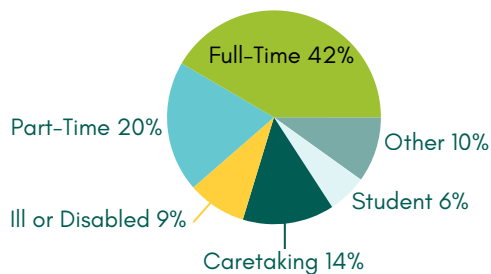


3.4 million  
working  
Californians

## MANY MEDI-CAL ENROLLEES WORK

Medi-Cal provides health insurance to individuals and families with low incomes, including many low-wage workers who can't get affordable coverage at their job.

Nearly **2 in 3** nondisabled  
nonelderly adults in Medi-Cal work



Source: CHCF - Do Medi-Cal Enrollees Work, January 2025

MEDI-CAL PROVIDES COMPREHENSIVE  
COVERAGE AT NO COST TO THE MEMBER  
Most Services are Covered through Managed Care

Comprehensive Health Care & Care Coordination	Prescription Drugs*	Behavioral Health Care**
Enhanced Care Management & Community Supports	Transportation to/from Appointments	Long-Term Care
Maternity Care	Vision Care*	Dental Services*

No asterisk carved into managed care; \*carved out to FFS; \*\*specialty mental health and SUD services carved out to counties

## VAST MAJORITY OF AMERICANS VIEW MEDICAID AND MEDICARE FAVORABLY



Source: Kirzinger, A., Montalvo, J., III, Kearney, A., Sparks, G., Valdes, I., & Hamel, L. (2025, January 28). KFF Health Tracking Poll: Public weighs health care spending and other priorities for incoming administration | KFF.org

## COMMUNITY REINVESTMENT

Nearly **\$800 million reinvested** in  
community-driven solutions and  
infrastructure projects **over the past  
5 years.**

As mission-driven, community-based plans, local plans have a long track record of investing their reserves back into the communities they serve rather than to shareholders. These investments have strengthened California's Medi-Cal workforce, addressed food and nutrition needs beyond the scope of the Medi-Cal program, and have supported improving the health of the Medi-Cal members local plans serve.

