



**LHPC**  
Local Health Plans *of California*

Medi-Cal  
Enrollment Report  
Fiscal Year Comparison

Through December 31, 2023

18-Mar-24

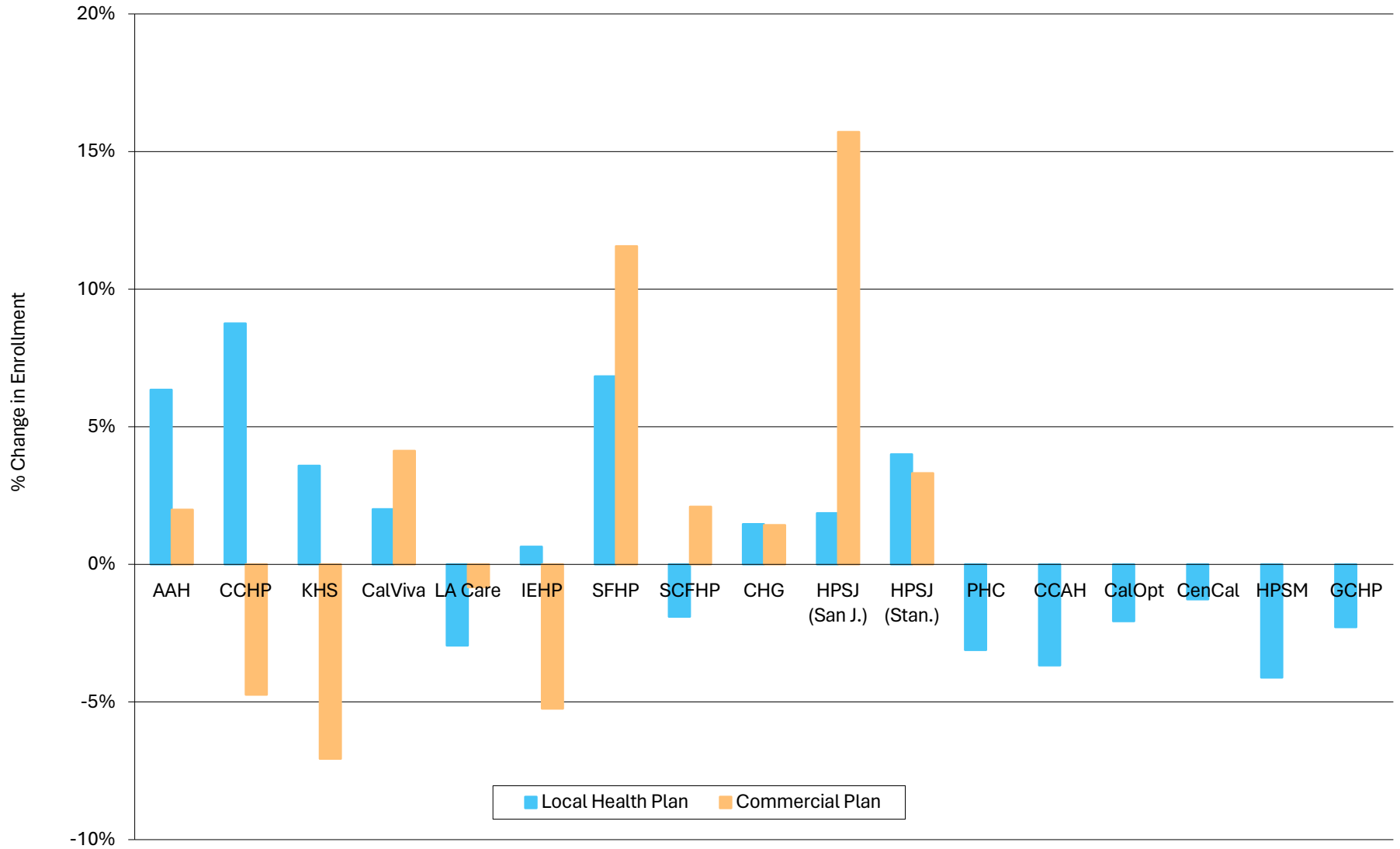
## Total Medi-Cal Enrollment Fiscal Year Comparison

	January 2023	February 2023	March 2023	April 2023	May 2023	June 2023	July 2023	August 2023	September 2023	October 2023	November 2023	December 2023	% of current enrollment	Change in Enrollment - Jan. 2023 to present	(Change last year vs. prior month)
<b>Alameda County</b>															
Alameda Alliance for Health	324,669	347,016	349,850	353,148	355,148	356,519	353,588	350,550	346,995	350,201	348,052	346,681	80%	22,012	6.32%
Blue Cross of California	82,911	92,375	93,748	95,506	96,474	97,207	96,333	95,434	94,009	91,153	88,039	84,596	20%	1,685	1.91%
<b>Contra Costa County</b>															
Contra Costa Health Plan	243,819	259,319	262,026	265,080	266,431	267,935	267,954	268,740	265,714	269,489	268,605	267,225	88%	23,406	8.71%
Blue Cross of California	37,556	41,096	40,994	41,008	40,899	40,740	40,297	40,167	39,191	38,254	37,198	35,857	12%	-1,699	-4.57%
<b>Kern County</b>															
Kern Family Health Care	350,488	364,824	367,183	370,013	372,063	374,037	373,244	372,874	367,619	364,474	362,014	363,505	81%	13,017	3.60%
Health Net	88,697	95,464	96,051	96,519	96,912	97,262	96,720	96,525	94,310	91,851	89,033	82,844	19%	-5,853	-6.57%
<b>Kings, Madera, Fresno Counties</b>															
CalViva Health	421,882	435,626	437,999	441,480	444,024	445,774	444,501	442,714	439,473	437,151	434,058	430,517	68%	8,635	1.99%
Blue Cross of California	197,366	213,777	214,218	215,306	216,006	216,622	215,212	213,601	211,588	210,166	208,044	205,861	32%	8,495	4.08%
<b>Los Angeles County</b>															
L.A. Care Health Plan	2,632,030	2,699,467	2,713,570	2,731,977	2,744,648	2,753,514	2,741,756	2,742,704	2,692,849	2,653,861	2,604,843	2,556,716	69%	-75,314	-2.89%
Health Net	1,135,177	1,165,902	1,173,780	1,184,056	1,190,613	1,196,112	1,193,963	1,195,628	1,175,752	1,160,718	1,142,749	1,125,817	31%	-9,360	-0.82%
<b>Riverside &amp; San Bernardino Counties</b>															
Inland Empire Health Plan	1,617,302	1,649,230	1,659,989	1,673,464	1,682,639	1,691,941	1,688,995	1,691,974	1,669,260	1,655,766	1,641,444	1,627,763	88%	10,461	0.64%
Molina Health Care of California	225,115	232,514	232,655	233,082	232,985	233,019	230,660	229,645	224,011	220,570	217,199	213,909	12%	-11,206	-5.16%
<b>San Francisco County</b>															
San Francisco Health Plan	171,859	190,818	192,369	194,239	194,992	195,609	194,608	192,766	190,904	188,804	186,574	184,465	85%	12,606	6.76%
Blue Cross of California	28,345	33,197	33,359	33,752	33,972	34,041	33,867	33,482	33,167	32,828	32,380	32,050	15%	3,705	11.44%
<b>Santa Clara County</b>															
Santa Clara Family Health Plan	324,512	329,600	331,506	334,197	335,332	336,620	335,256	335,586	330,764	327,503	323,625	318,462	78%	-6,050	-1.87%
Blue Cross of California	90,431	92,950	94,011	95,290	95,862	96,355	96,021	96,526	95,038	94,454	93,572	92,371	22%	1,940	2.07%
<b>San Diego County</b>															
Community Health Group	349,019	355,350	356,987	359,264	360,472	361,800	359,584	360,125	356,059	353,613	352,684	354,218	37%	5,199	1.47%
Aetna, BlueShield, Health Net, KP Cal, Molina	596,324	616,581	621,718	628,257	632,122	635,398	632,071	633,309	625,010	618,957	613,029	604,945	63%	8,621	1.41%
<b>San Joaquin County</b>															
Health Plan of San Joaquin	261,459	275,641	276,911	278,702	279,771	280,545	279,336	279,100	275,222	272,775	269,910	266,413	89%	4,954	1.84%
Health Net	26,918	31,478	31,920	32,301	32,630	32,876	32,951	33,079	32,488	32,486	32,212	31,937	11%	5,019	15.58%
<b>Stanislaus County</b>															
Health Plan of San Joaquin	164,915	174,113	175,294	176,628	177,705	178,664	178,323	178,561	176,522	175,294	173,685	171,780	71%	6,865	3.95%
Health Net	67,878	72,795	73,366	73,835	74,071	74,325	73,937	73,949	72,547	71,904	71,104	70,204	29%	2,326	3.27%
<b>Marin, Mendocino, Napa, Solano, Sonoma, Yolo, Del Norte, Humboldt, Lake, Lassen, Modoc, Shasta, Siskiyou, Trinity Counties</b>															
Partnership HealthPlan of California	681,777	684,747	687,933	693,548	696,353	699,138	696,551	694,256	685,657	677,476	668,996	661,237	100%	-20,540	-3.07%
<b>Merced, Monterey, Santa Cruz Counties</b>															
Central California Alliance for Health	420,261	421,765	423,188	426,096	427,735	428,790	426,850	425,636	419,516	415,204	410,250	405,390	100%	-14,871	-3.62%
<b>Orange County</b>															
CalOptima Health	952,526	959,343	960,871	967,457	973,054	973,973	967,109	971,965	961,410	953,264	944,380	933,277	100%	-19,249	-2.04%
<b>Santa Barbara &amp; San Luis Obispo</b>															
CenCal Health	229,875	231,372	232,031	233,737	235,314	235,993	234,733	234,770	232,433	231,261	229,511	226,989	100%	-2,886	-1.26%
<b>San Mateo County</b>															
Health Plan of San Mateo	149,053	149,826	150,909	152,326	152,747	153,393	152,610	152,578	150,595	147,832	145,297	143,165	100%	-5,888	-4.05%
<b>Ventura County</b>															
Gold Coast Health Plan	249,108	250,918	251,590	253,472	254,937	255,293	254,692	255,209	251,160	248,656	246,223	243,551	100%	-5,557	-2.26%
<b>Total Enrollment</b>															
Medi-Cal Statewide *	13,187,240	13,865,356	13,942,598	14,052,946	14,120,858	14,174,031	14,119,109	14,112,197	13,915,585	13,780,268	13,612,877	13,443,206			
In 36 LHPC Counties	11,901,216	12,467,104	12,536,026	12,633,740	12,695,911	12,743,495	12,691,722	12,691,453	12,509,263	12,385,965	12,234,710	12,081,745		180,529	1.48%
LHPC Plans only	9,373,451	9,778,975	9,830,206	9,904,828	9,953,365	9,989,538	9,949,690	9,950,108	9,812,152	9,722,624	9,610,151	9,501,354		127,903	1.33%
% LHPC in 36 LHPC Counties	78.76%	78.44%	78.42%	78.40%	78.40%	78.39%	78.40%	78.40%	78.44%	78.50%	78.55%	78.64%			
% LHPC Statewide	71.08%	70.53%	70.50%	70.48%	70.49%	70.48%	70.47%	70.51%	70.51%	70.55%	70.60%	70.68%			

\*2-plan, Imperial/San Benito, Regional, GMC, & COHS

Data source: <https://data.chhs.ca.gov/dataset/medi-cal-managed-care-enrollment-report>

**Change in Medi-Cal Enrollment**  
**% Increase/Decrease**  
**January 2023 - December 2023**



## Total Medi-Cal Disenrollment

	January 2023	February 2023	March 2023	April 2023	May 2023	June 2023	July 2023	August 2023	September 2023	October 2023	November 2023	December 2023	Percent of Disenrollment	Total Disenrollment (Since Jan. 2023)	Change in Monthly Disenrollment	Percent Change in Monthly Disenrollment
<b>Alameda County</b>																
Alameda Alliance for Health	351	460	471	471	253	333	251	195	153	535	840	600	0.7%	4,913	-240	-28.6%
Anthem Blue Cross Partnership	441	729	657	657	400	501	395	296	289	555	967	84,529	99.3%	90,416	83,562	8641.4%
<b>Contra Costa County</b>																
Contra Costa Health Plan	195	277	275	275	156	161	183	111	102	403	623	678	1.9%	3,439	55	8.8%
Anthem Blue Cross Partnership	281	366	342	342	255	218	170	195	143	207	434	35,494	98.1%	38,447	35,060	8078.3%
Kaiser Permanente	0	0	0	0	0	0	0	0	0	0	0	11	0.0%	11	11	100.0%
<b>Kern County</b>																
Kern Family Health Care	177	215	223	223	131	188	107	116	88	81	216	665	0.8%	2,430	449	207.9%
Anthem Blue Cross Partnership	0	0	0	0	0	0	0	0	0	0	0	184	0.2%	184	184	100.0%
Kaiser Permanente	0	0	0	0	0	0	0	0	0	0	0	14	0.0%	14	14	100.0%
Health Net	454	634	655	655	457	593	365	339	364	878	5,921	80,343	98.9%	91,658	74,422	1256.9%
<b>Kings, Madera, Fresno Counties</b>																
CalViva Health	285	282	269	269	159	182	165	181	240	143	309	543	50.2%	3,027	234	75.7%
Anthem Blue Cross Partnership	747	854	944	944	583	655	443	483	418	374	328	539	49.8%	7,312	211	64.3%
<b>Los Angeles County</b>																
L.A. Care Health Plan	2,996	3,174	3,781	3,781	2,773	3,243	2,523	2,188	2,626	2,919	5,414	9,844	71.8%	45,262	4,430	81.8%
Health Net	2,534	2,799	3,183	3,183	2,359	2,597	2,155	1,885	2,215	2,059	2,910	3,792	27.7%	31,671	882	30.3%
Kaiser Permanente	0	0	0	0	0	0	0	0	0	0	0	75	0.5%	75	75	100.0%
<b>Riverside, San Bernardino Counties</b>																
Inland Empire Health Plan	953	1,088	1,115	1,115	848	946	793	661	1,011	946	1,802	2,057	54.0%	13,335	255	14.2%
Kaiser Permanente	0	0	0	0	0	0	0	0	0	0	0	13	0.3%	13	13	100.0%
Molina Health Care Partner	1,877	1,834	2,093	2,093	1,509	1,785	1,415	1,511	1,328	1,238	1,323	1,737	45.6%	19,743	414	31.3%
<b>San Francisco County</b>																
San Francisco Health Plan	185	298	217	217	111	111	85	115	70	84	194	234	55.7%	1,921	40	20.6%
Blue Cross of California	182	444	368	368	161	190	141	117	123	166	139	186	44.3%	2,585	47	33.8%
<b>Santa Clara County</b>																
Santa Clara Family Health Plan	263	275	250	250	180	220	406	177	262	211	359	555	52.2%	3,408	196	54.6%
Blue Cross of California	363	374	439	439	328	347	394	281	299	298	331	508	47.8%	4,401	177	53.5%
<b>San Diego County</b>																
Community Health Group	681	690	683	683	496	479	392	560	494	498	550	1,216	1.0%	7,422	666	121.1%
Aetna, BlueShield, Health Net, Molina, SCAN	1,863	1,804	1,869	1,869	1,472	1,701	1,528	1,592	1,666	2,837	9,801	123,413	99.0%	151,415	113,612	1159.2%
<b>San Joaquin County</b>																
Health Plan of San Joaquin	164	246	205	205	163	182	117	89	313	154	457	715	71.0%	3,010	258	56.5%
Health Net	184	204	268	268	157	149	161	128	123	116	182	292	29.0%	2,232	110	60.4%
<b>Stanislaus County</b>																
Health Plan of San Joaquin	136	237	230	230	134	165	168	76	191	190	278	356	55.8%	2,391	78	28.1%
Health Net	215	314	338	338	227	307	183	169	285	190	246	282	44.2%	3,094	36	14.6%
<b>Total Statewide Medi-Cal Disenrollment</b>																
Total Statewide Medi-Cal Disenrollment	19,173	21,390	22,407	22,412	15,363	19,114	14,891	14,337	14,997	18,706	39,069	629,487		851,346	590,418	1511.2%
In 14 LHPC Counties	15,527	17,598	18,875	18,875	13,312	15,253	12,540	11,465	12,803	15,082	33,624	348,875		533,829	315,251	937.6%
LHPC Plans only	6,386	7,242	7,719	7,719	5,404	6,210	5,190	4,469	5,550	6,164	11,042	17,463		90,558	6,421	58.2%

Monthly Choice vs Default Enrollment  
as % of Total Enrollment

	October 2023						November 2023						December 2023					
	Choice		Default				Choice		Default				Choice		Default			
	Choice Enrollment	% of choice = LI*	Auto Assigned Enrollment	Passive Enrollment (Provider Linkage Default)	Prior Plan Enrollment (Continuity of Care)	% Total Defaulted Enrollment**	Choice Enrollment	% of choice = LI*	Auto Assigned Enrollment	Passive Enrollment (Provider Linkage Default)	Prior Plan Enrollment (Continuity of Care)	% Total Defaulted Enrollment**	Choice Enrollment	% of choice = LI*	Auto Assigned Enrollment	Passive Enrollment (Provider Linkage Default)	Prior Plan Enrollment (Continuity of Care)	% Total Defaulted Enrollment**
<b>Alameda County</b>																		
Alameda Alliance for Health	846	100%	0	0	0	0%	1,123	100%	0	0	0	0%	79,293	92%	0	2	0	0%
Kaiser Permanente	0		0	0	0	0%	0		0	0	0	0%	6,936		0	2	0	0%
<b>Alpine &amp; El Dorado Counties</b>																		
Mountain Valley Health Plan	0	0%	0	0	0	0%	0	0%	0	0	0	0%	1,937	34%	245	6,537	0	78%
Anthem Blue Cross Partnership	291		139	0	27	36%	1,029		138	0	14	13%	3,628		179	6,681	2	65%
Kaiser Permanente	46		0	0	19	29%	59		0	0	10	14%	111		0	412	13	79%
<b>Contra Costa County</b>																		
Contra Costa Health Plan	539	100%	0	0	0	0%	633	100%	0	0	0	0%	33,644	91%	0	5	0	0%
Kaiser Permanente	0		0	0	0	0%	0		0	0	0	0%	3,497		0	2	0	0%
<b>Fresno, Kings, Madera Counties</b>																		
CalViva Health	1,572	66%	1,052	0	592	51%	1,575	65%	944	0	481	48%	2,586	54%	1,370	76	605	44%
Anthem Blue Cross of California	811		955	0	314	61%	834		887	0	257	58%	1,371		1,178	67	306	53%
Kaiser Permanente	0		0	0	0	0%	0		0	0	0	0%	845		0	0	95	10%
<b>Imperial County</b>																		
Community Health Plan of Imperial Valley	0	0%	0	0	0	0%	0	0%	0	0	0	0%	98,240	100%	0	0	0	0%
Kaiser Permanente	0		0	0	0	0%	0		0	0	0	0%	11		0	0	0	0%
<b>Kern County</b>																		
Kern Family Health Care	2,345	100%	922	0	485	38%	5,973	100%	765	0	531	18%	14,888	68%	1,224	50,779	556	78%
Anthem Blue Cross Partnership	0		0	0	0	0%	0		0	0	0	0%	5,824		2,000	11,128	0	69%
Kaiser Permanente	0		0	0	0	0%	0		0	0	0	0%	1,216		0	1,752	78	60%
<b>Los Angeles County</b>																		
L.A. Care Health Plan	9,784	63%	9,181	0	1,318	52%	10,488	62%	10,833	0	1,461	54%	21,729	44%	11,578	500	1,997	39%
Health Net	5,786		6,216	0	613	54%	6,421		7,418	0	634	56%	14,999		9,453	389	973	42%
Kaiser Permanente	0		0	0	0	0%	0		0	0	0	0%	13,041		0	0	591	4%
Positive Health Care	11		0	0	0	0%	15		0	0	0	0%	12		0	0	0	0%

Data Source: COPS-11 Enrollment Summary Report

\* % of Choice=LI Calculation:  $LI\ Choice / (LI\ Choice + Commercial\ Choice)$

\*\* % Total Defaulted Enrollment=  $Total\ Default\ Enrollment / (Choice + Default)$

Monthly Choice vs Default Enrollment  
as % of Total Enrollment

	October 2023						November 2023						December 2023					
	Choice		Default				Choice		Default				Choice		Default			
	Choice Enrollment	% of choice = LI*	Auto Assigned Enrollment	Passive Enrollment (Provider Linkage Default)	Prior Plan Enrollment (Continuity of Care)	% Total Defaulted Enrollment**	Choice Enrollment	% of choice = LI*	Auto Assigned Enrollment	Passive Enrollment (Provider Linkage Default)	Prior Plan Enrollment (Continuity of Care)	% Total Defaulted Enrollment**	Choice Enrollment	% of choice = LI*	Auto Assigned Enrollment	Passive Enrollment (Provider Linkage Default)	Prior Plan Enrollment (Continuity of Care)	% Total Defaulted Enrollment**
<b>Marin, Napa, Placer, Solano, Sonoma, Sutter, Yolo, Yuba Counties</b>																		
Partnership HealthPlan of California	190	58%	0	0	0	0%	87	31%	0	0	0	0%	125,034	96%	0	2	0	0%
Kaiser Permanente	140		0	0	0	0%	191		0	0	0	0%	4,587		0	0	0	0%
<b>Mariposa &amp; Santa Cruz Counties</b>																		
Central California Alliance for Health	8	100%	0	0	0	0%	11	100%	0	0	0	0%	5,345	99%	0	0	0	0%
Kaiser Permanente	0		0	0	0	0%	0		0	0	0	0%	40		0	0	0	0%
<b>Orange County</b>																		
CalOptima Health	137	100%	0	0	0	0%	167	100%	0	0	0	0%	662	44%	0	0	0	0%
Kaiser Permanente	0		0	0	0	0%	0		0	0	0	0%	854		0	0	0	0%
<b>Riverside &amp; San Bernardino Counties</b>																		
Inland Empire Health Plan	7,602	85%	6,785	0	1,064	51%	7,521	85%	6,776	0	984	51%	11,452	59%	6,743	240	936	41%
Kaiser Permanente	0		0	0	0	0%	0		0	0	0	0%	6,191		0	0	352	5%
Molina Healthcare Partner	1,316		1,317	0	142	53%	1,287		1,342	0	140	54%	1,872		2,594	46	151	60%
<b>San Diego County</b>																		
Community Health Group	2,852	39%	1,579	0	169	38%	5,332	39%	1,989	0	302	30%	12,328	39%	1,864	35,618	219	75%
Blue Shield Promise	1,920		1,315	0	51	42%	4,035		1,675	0	89	30%	10,124		1,869	28,864	68	75%
Kaiser Permanente	617		0	0	112	15%	915		0	0	167	15%	1,476		0	2,443	154	64%
Molina Healthcare Partner	1,864		1,360	0	112	44%	3,393		1,774	0	218	37%	7,499		1,797	31,162	214	82%
<b>San Francisco County</b>																		
San Francisco Health Plan	871	75%	845	0	163	54%	828	73%	1,026	0	218	60%	1,182	49%	1,000	77	238	53%
Anthem Blue Cross Partnership	295		255	0	21	48%	311		263	0	46	50%	376		524	5	46	60%
Kaiser Permanente	0		0	0	0	0%	0		0	0	0	0%	874		0	0	107	11%
<b>San Joaquin County</b>																		
Health Plan of San Joaquin	1,105	84%	683	0	325	48%	1,105	84%	726	0	347	49%	1,885	42%	950	58	386	43%
Health Net	203		514	0	37	73%	205		643	0	57	77%	285		726	44	62	74%
Kaiser Permanente	0		0	0	0	0%	0		0	0	0	0%	2,287		0	0	167	7%

Data Source: COPS-11 Enrollment Summary Report

\* % of Choice=LI Calculation:  $LI\ Choice / (LI\ Choice + Commercial\ Choice)$

\*\* % Total Defaulted Enrollment=  $Total\ Default\ Enrollment / (Choice + Default)$

Monthly Choice vs Default Enrollment  
as % of Total Enrollment

	October 2023						November 2023						December 2023					
	Choice		Default				Choice		Default				Choice		Default			
	Choice Enrollment	% of choice = LI*	Auto Assigned Enrollment	Passive Enrollment (Provider Linkage Default)	Prior Plan Enrollment (Continuity of Care)	% Total Defaulted Enrollment**	Choice Enrollment	% of choice = LI*	Auto Assigned Enrollment	Passive Enrollment (Provider Linkage Default)	Prior Plan Enrollment (Continuity of Care)	% Total Defaulted Enrollment**	Choice Enrollment	% of choice = LI*	Auto Assigned Enrollment	Passive Enrollment (Provider Linkage Default)	Prior Plan Enrollment (Continuity of Care)	% Total Defaulted Enrollment**
<b>San Mateo County</b>																		
Health Plan of San Mateo	21	100%	0	0	0	0%	25	100%	0	0	0	0%	275	47%	0	0	0	0%
Kaiser Permanente	0		0	0	0	0%	0		0	0	0	0%	304		0	0	0	0%
<b>Santa Clara County</b>																		
Santa Clara Family Health Plan	1,711	72%	1,366	0	193	48%	1,932	74%	1,718	0	321	51%	4,477	60%	1,800	33	218	31%
Anthem Blue Cross Partnership	658		844	0	57	58%	663		1,099	0	97	64%	1,000		1,274	23	62	58%
Kaiser Permanente	0		0	0	0	0%	0		0	0	0	0%	2,002		0	0	129	6%
<b>Stanislaus County</b>																		
Health Plan of San Joaquin	911	78%	581	0	214	47%	1,017	79%	572	0	212	44%	1,516	81%	643	19	241	37%
Health Net	257		452	0	115	69%	274		441	0	106	67%	348		558	26	116	67%
Kaiser Permanente	0		0	0	0	0%	0		0	0	0	0%	872		0	0	65	7%
<b>Ventura County</b>																		
Gold Coast Health Plan	18	100%	0	0	0	0%	40	100%	0	0	0	0%	223	59%	0	0	0	0%
Kaiser Permanente	0		0	0	0	0%	0		0	0	0	0%	153		0	0	0	0%

Data Source: COPS-11 Enrollment Summary Report

\* % of Choice=LI Calculation:  $LI\ Choice / (LI\ Choice + Commercial\ Choice)$

\*\* % Total Defaulted Enrollment=  $Total\ Default\ Enrollment / (Choice + Default)$

% Comparison of Monthly  
Choice and Auto Assignment Enrollment

	October 2023				November 2023				December 2023			
	Choice		Auto Assignment		Choice		Auto Assignment		Choice		Auto Assignment	
	Count	%	Count	%	Count	%	Count	%	Count	%	Count	%
<b>Alameda County</b>												
Alameda Alliance for Health	846	100%	0	0%	1,123	100%	0	0%	79,293	92%	0	0%
Kaiser Permanente	0	0%	0	0%	0	0%	0	0%	6,936	8%	0	0%
<b>Alpine &amp; El Dorado Counties</b>												
Mountain Valley Health Plan	0	0%	0	0%	0	0%	0	0%	1,937	34%	245	58%
Anthem Blue Cross Partnership	291	86%	139	100%	1,029	95%	138	100%	3,628	64%	179	42%
Kaiser Permanente	46	14%	0	0%	59	5%	0	0%	111	2%	0	0%
<b>Contra Costa County</b>												
Contra Costa Health Plan	539	100%	0	0%	633	100%	0	0%	33,644	91%	0	0%
Kaiser Permanente	0	0%	0	0%	0	0%	0	0%	3,497	9%	0	0%
<b>Fresno, Kings, Madera, Counties</b>												
CalViva Health	1,572	66%	1,052	52%	1,575	65%	944	52%	2,586	54%	1,370	54%
Anthem Blue Cross Partnership	811	34%	955	48%	834	35%	887	48%	1,371	29%	1,178	46%
Kaiser Permanente	0	0%	0	0%	0	0%	0	0%	845	18%	0	0%
<b>Imperial County</b>												
Community Health Plan of Imperial Valley	0	0%	0	0%	0	0%	0	0%	98,240	100%	0	0%
Kaiser Permanente	0	0%	0	0%	0	0%	0	0%	11	0%	0	0%
<b>Kern County</b>												
Kern Family Health Care	2,345	100%	922	100%	5,973	100%	765	100%	14,888	68%	1,224	38%
Anthem Blue Cross Partnership	0	0%	0	0%	0	0%	0	0%	5,824	27%	2,000	62%
Kaiser Permanente	0	0%	0	0%	0	0%	0	0%	1,216	6%	0	0%
<b>Los Angeles County</b>												
L.A. Care Health Plan	9,784	63%	9,181	60%	10,488	62%	10,833	59%	21,729	44%	11,578	55%
Health Net	5,786	37%	6,216	40%	6,421	38%	7,418	41%	14,999	30%	9,453	45%
Kaiser Permanente	0	0%	0	0%	0	0%	0	0%	13,041	26%	0	0%
Positive Health Care	11	0%	0	0%	15	0%	0	0%	12	0%	0	0%
<b>Marin, Napa, Placer, Solano, Sonoma, Sutter, Yolo, Yuba Counties</b>												
Partnership HealthPlan of California	190	58%	0	0%	87	31%	0	0%	125,034	96%	0	0%
Kaiser Permanente	140	42%	0	0%	191	69%	0	0%	4,587	4%	0	0%
<b>Mariposa &amp; Santa Cruz Counties</b>												
Central California Alliance for Health	8	100%	0	0%	11	0%	0	0%	5,345	99%	0	0%
Kaiser Permanente	0	0%	0	0%	0	0%	0	0%	40	1%	0	0%
<b>Orange County</b>												
CalOptima Health	137	100%	0	0%	167	100%	0	0%	662	44%	0	0%
Kaiser Permanente	0	0%	0	0%	0	0%	0	0%	854	56%	0	0%



% Comparison of Monthly  
Choice and Auto Assignment Enrollment

	October 2023				November 2023				December 2023			
	Choice		Auto Assignment		Choice		Auto Assignment		Choice		Auto Assignment	
	Count	%	Count	%	Count	%	Count	%	Count	%	Count	%
<b>Riverside &amp; San Bernardino Counties</b>												
Inland Empire Health Plan	7,602	85%	6,785	84%	7,521	85%	6,776	83%	11,452	59%	6,743	72%
Kaiser Permanente	0	0%	0	0%	0	0%	0	0%	6,191	32%	0	0%
Molina Health Care	1,316	15%	1,317	16%	1,287	15%	1,342	17%	1,872	10%	2,594	28%
<b>San Diego County</b>												
Community Health Group	2,852	39%	1,579	37%	5,332	39%	1,989	37%	12,328	39%	1,864	34%
Blue Shield Promise	1,920	26%	1,315	31%	4,035	30%	1,675	31%	10,124	32%	1,869	34%
Kaiser Permanente	617	9%	0	0%	915	7%	0	0%	1,476	5%	0	0%
Molina Healthcare Partner	1,864	26%	1,360	32%	3,393	25%	1,774	33%	7,499	24%	1,797	32%
<b>San Francisco County</b>												
San Francisco Health Plan	871	75%	845	77%	828	73%	1,026	80%	1,182	49%	1,000	66%
Anthem Blue Cross Partnership	295	25%	255	23%	311	27%	263	20%	376	15%	524	34%
Kaiser Permanente	0	0%	0	0%	0	0%	0	0%	874	36%	0	0%
<b>San Joaquin County</b>												
Health Plan of San Joaquin	1,105	84%	683	57%	1,105	84%	726	53%	1,885	42%	950	57%
Health Net	203	16%	514	43%	205	16%	643	47%	285	6%	726	43%
Kaiser Permanente	0	0%	0	0%	0	0%	0	0%	2,287	51%	0	0%
<b>San Mateo County</b>												
Health Plan of San Mateo	21	100%	0	0%	25	100%	0	0%	275	47%	0	0%
Kaiser Permanente	0	0%	0	0%	0	0%	0	0%	304	53%	0	0%
<b>Santa Clara County</b>												
Santa Clara Family Health Plan	1,711	72%	1,366	62%	1,932	74%	1,718	61%	4,477	60%	1,800	59%
Anthem Blue Cross Partnership	658	28%	844	38%	663	26%	1,099	39%	1,000	13%	1,274	41%
Kaiser Permanente	0	0%	0	0%	0	0%	0	0%	2,002	27%	0	0%
<b>Stanislaus County</b>												
Health Plan of San Joaquin	911	78%	581	56%	1,017	79%	572	56%	1,516	55%	643	54%
Health Net	257	22%	452	44%	274	21%	441	44%	348	13%	558	46%
Kaiser Permanente	0	0%	0	0%	0	0%	0	0%	872	32%	0	0%
<b>Ventura County</b>												
Gold Coast Health Plan	18	100%	0	0%	40	100%	0	0%	223	59%	0	0%
Kaiser Permanente	0	0%	0	0%	0	0%	0	0%	153	41%	0	0%

**Medicare Medi-Cal Plan Enrollment  
EAE Plans**

	January 2023	February 2023	March 2023	April 2023	May 2023	June 2023	July 2023	August 2023	September 2023	October 2023	November 2023	December 2023	% of current enrollment	Change in Enrollment - Jan. 2023 to present	(Change last year vs. prior month)
<b>Los Angeles County</b>															
L.A. Care Health Plan (Medicare Plus)	17,216	17,484	17,569	17,511	17,662	17,874	18,136	18,099	18,332	18,371	18,326	18,322	15%	1,106	6.04%
Anthem MediBlue Full Dual Advantage	17,384	21,157	22,473	23,600	24,986	24,818	26,366	27,579	28,451	29,354	30,076	30,363	25%	12,979	43.15%
Blue Shield TotalDual Plan	4,709	9,385	11,142	11,036	10,853	10,756	10,790	10,593	10,649	10,570	10,458	10,390	9%	5,681	54.32%
Kaiser Permanente Senior Advantage Medicare Medi-Cal	20,384	22,435	22,839	23,301	23,703	24,153	24,605	25,143	25,578	26,007	26,301	26,475	22%	6,091	23.16%
Molina Medicare Complete Care Plus	1,624	1,886	2,053	2,187	2,364	2,464	2,722	2,915	3,257	3,547	3,832	3,894	3%	2,270	59.24%
Wellcare by Health Net Dual Align 001	13,524	15,001	14,911	14,826	14,488	14,350	14,210	14,181	14,152	14,224	14,209	14,148	12%	624	4.39%
Wellcare by Health Net Dual Align 129	6,898	7,697	16,131	16,471	16,827	17,166	17,518	17,799	18,012	18,096	18,211	18,151	15%	11,253	61.79%
<b>Orange County</b>															
CalOptima Health (OneCare)	17,034	17,078	17,145	17,370	17,462	17,567	17,662	17,718	17,790	17,740	17,687	17,651	100%	617	3.49%
<b>Riverside &amp; San Bernardino Counties</b>															
Inland Empire Health Plan (IEHP Dual Choice)	31,547	31,648	32,022	32,451	32,883	33,266	33,707	33,800	34,182	34,427	34,542	34,412	71%	2,865	8.29%
Molina Medicare Complete Care Plus	2,625	2,760	2,854	2,948	3,120	3,300	3,478	3,712	3,884	4,152	4,379	4,418	9%	1,793	40.95%
Wellcare by Health Net Dual Align 129	1,916	3,118	7,780	8,122	8,551	8,866	9,149	9,414	9,673	9,900	10,012	9,973	20%	8,057	80.47%
<b>San Diego County</b>															
Community Health Group (CommuniCare Advantage)	6,560	6,523	6,535	6,511	6,532	6,561	6,592	6,618	6,687	6,756	6,765	6,724	21%	164	2.42%
Aetna Medicare Preferred Plan	461	540	796	844	865	891	918	941	960	962	925	908	3%	447	48.32%
Blue Shield TotalDual Plan	3,630	6,404	7,462	7,443	7,400	7,378	7,336	7,285	7,238	7,203	7,153	7,064	22%	3,434	48.01%
Kaiser Permanente Senior Advantage Medicare Medi-Cal	3,622	3,962	4,025	4,099	4,166	4,236	4,348	4,487	4,548	4,645	4,679	4,711	14%	1,089	23.27%
Molina Medicare Complete Care Plus	3,486	3,712	3,985	4,270	4,609	4,945	5,305	5,707	6,125	6,428	6,785	6,924	21%	3,438	50.67%
Wellcare by Health Net Dual Align 129	2,250	2,708	5,285	5,453	5,634	5,743	5,868	5,999	6,049	6,142	6,194	6,166	19%	3,916	63.22%
<b>San Mateo County</b>															
Health Plan of San Mateo (CareAdvantage)	8,043	8,011	8,007	8,011	8,001	7,965	8,550	7,905	8,484	8,468	8,443	8,407	85%	364	4.31%
Kaiser Permanente Senior Advantage Medicare Medi-Cal	1,120	1,216	1,244	1,266	1,282	1,311	1,337	1,358	1,372	1,400	1,414	1,430	15%	310	21.92%
<b>Santa Clara County</b>															
Santa Clara Family Health Plan (DualConnect)	10,456	10,436	10,416	10,451	10,403	10,423	10,573	10,515	10,615	10,706	10,705	10,645	56%	189	1.77%
Anthem MediBlue Full Dual Advantage	3,090	3,641	3,806	3,901	4,067	4,109	4,173	4,333	4,401	4,456	4,525	4,555	24%	1,465	32.38%
Kaiser Permanente Senior Advantage Medicare Medi-Cal	3,168	3,379	3,430	3,462	3,497	3,525	3,567	3,631	3,670	3,720	3,756	3,790	20%	622	16.56%
<b>Total Enrollment</b>															
D-SNP Statewide	180,747	200,181	221,910	225,534	229,355	231,667	236,910	239,732	244,109	247,274	249,377	249,521		68,774	27.58%
LHPC Plans only	90,856	91,180	91,694	92,305	92,943	93,656	95,220	94,655	96,090	96,468	96,468	96,161		5,305	5.50%
% LHPC Statewide	50.27%	45.55%	41.32%	40.93%	40.52%	40.43%	40.19%	39.48%	39.36%	39.01%	38.68%	38.54%			

Data source since 1/1/2023: <https://www.cms.gov/data-research/statistics-trends-and-reports/medicare-advantagepart-d-contract-and-enrollment-data/monthly-enrollment-contract/plan/state/county>